

ESSENTIALS 6MS



ABOUT THE LUSIO ESSENTIALS BAY SERIES

The Lusio Commercial and Industrial Essentials Bay Series features high lumen, high efficacy LED fixtures with economically designed housings and fast paybacks for cost conscious applications or in one-for-one replacement of traditional fluorescent and HID light sources. As with all Lusio fixtures, the Lusio Essentials Bay Series is backed by an industry-leading 7-year warranty.

ESSENTIALS 6MS FIXTURE DESCRIPTION

The 6MS fixture has a 2x2-ft (nominal) housing and is a highly energy efficient alternative to 6 lamp T5HO fluorescent and 400 Watt metal halide fixtures.

115° distribution. 1.46 maximum spacing criterion (diagonal) allows for wide fixture spacing and high uniformity. Typically used for mounting heights of 15-30 feet (4.5-9 M).

ESSENTIALS 6MS • LIGHT OUTPUT

	WATTAGE ¹	LUMENS ¹	EFFICACY ¹	CRI ²
NO BAFFLE WITH CLEAR LENS				
COOL WHITE (5200K +/- 475K) ³	187	17,000	91	70
NEUTRAL WHITE (3985K +/- 275K) ³	187	16,500	88	70
BAFFLE (BAFY) WITH CLEAR LENS				
COOL WHITE (5200K +/- 475K) ³	187	16,800	90	70
NEUTRAL WHITE (3985K +/- 275K) ³	187	16,300	87	70
FROSTED LENS (FROST)				
COOL WHITE (5200K +/- 475K) ³	187	14,000	75	70
NEUTRAL WHITE (3985K +/- 275K) ³	187	13,600	73	70

¹Typical ²Typical CRI. Contact factory if your application has specific requirements of 70 CRI minimum or higher.
³Consult factory for other CCT offerings. Lead times may be longer.

ESSENTIALS 6MS • DIMENSIONS: INS (CMS)

LENGTH	WIDTH	DEPTH	WEIGHT
23 1/8 (58.7)	28 (71.1)	2 (5.1)	24 LBS (10.9 KGS)

³Dimensions listed are for the fixture only. See dimensional drawings for measurements with mounting hardware.

NOTES

PRELIMINARY DATA

AS OF OCTOBER 2012: The Lusio Essentials Bay Series 6MS fixture is engineering complete and in final certification stages. *Contact factory for lead times on this fixture.* Information is reliable but deemed **PRELIMINARY DATA** pending final certifications. See Lusio website at www.LusioLighting.com for updates.

ESSENTIALS 6MS • FEATURES

POWER

- **POWER INPUT:** 100-277, 347-480 VAC (50/60 hz)
- **POWER FACTOR:** Minimum 0.9 (typical 0.99)
- **DRIVE CURRENT:** 700mA
- **TOTAL HARMONIC DISTORTION:** Less than 20%
- **DIMMING:** Optional factory installed dimmable power supply (10-100% dimming) that interfaces to standard third party 0-10v dimmers.
- **SENSORS:** Optional on-board, factory installed occupancy sensors available. See Lusio Accessories sheet for more information.

RELIABILITY/LUMEN MAINTENANCE

- **L70 LIFE:** 92.3% lumen maintenance at 70,000 hours (77°F/25°C ambient); L70 predicted life of more than 200,000 hours.

LISTINGS AND CERTIFICATIONS

- UL | CUL listed for safety (1598)
- UL | CUL dry/damp location listed
- CE (120-277v only)
- RoHS compliant
- FCC Class B
- Lighting Facts (U.S. Department of Energy) certified
- DesignLights™ Consortium approved
- Made in the USA (contact factory)



FIXTURE

- **ENVIRONMENT:** Dry/damp locations. For interior applications.
- **END CAPS:** End caps are white powder coat (standard) with multi-stage corrosion resistant pre-treatment.
- **HEAT SINKS:** Extruded aluminum heat sinks allows for superior thermal management, decreasing LED junction temperature and ensuring long life.
- **POWER SUPPLY ACCESS:** Center channel cover is removable for access to power supplies and quick wiring.
- **LENSES:** Lenses are high efficiency, UV stabilized acrylic.
- **WARRANTY:** Limited product only 7-year warranty. See complete warranty coverage and exclusions details at www.LusioLighting.com.
- **REPLACEABLE LED LIGHT MODULES:** Allows field replacement of individual light modules. See Installation Instructions.
- **AMBIENT OPERATING TEMPERATURES**
Cable, Loop, Hook, and Stem Mounted Fixtures
-31° to 122°F (-35° to 50°C)
Surface Mounted Fixtures
-31° to 104°F (-35° to 40°C)
Cold Storage Applications
For applications -4°F (-20°C) and below, fixture should not be frequently switched on and off. LED driver has a 400 maximum switching cycle between cycling temperatures of -40° to -4°F (-40° to -20°C). Use a dimming system or an occupancy sensor (Lusio's OCCDIM sensor only) to set a low level dim (10% or 1V) instead of switching off. See Lusio Essentials Accessories for more information.

ESSENTIALS 6MS SAMPLE ORDERING NUMBER¹

PHOTO

LW-LUSIO-ES-BAY-6MS-CW-HOOK-120-DIMY-CL515



LW-LUSIO-ES-BAY-6MS			
PART NUMBER	LED COLOR TEMPERATURE	OPTIC	MOUNTING
	<p>CW Cool white⁵ 5200K +/- 475K</p> <p>NW Neutral white⁵ 3985K +/- 275K</p>	<p>BAFY Baffle</p> <p>FROST Frosted lens For a standard clear acrylic lens, leave part number field blank</p>	<p>CBL Cable ready³</p> <p>SUR Surface mount⁴</p> <p>HOOK Hook/loop mount⁵</p> <p>STEM Stem mount⁶</p>

VOLTAGE	DIMMING	OCCUPANCY SENSOR	CORD/PLUG
<p>120 277 120v 277v</p> <p>208 347 208v 347v</p> <p>240 480 240v 480v</p>	<p>DIMY Dimming For no dimming, leave part number field blank</p>	<p>OCC20 10-20 ft (3-6 m) heights^{1,7}</p> <p>OCC40 21-40 ft (6-12 m) heights^{1,7}</p> <p>OCCDIM20 10-20 ft (3-6.1 m) heights^{1,7}</p> <p>OCCDIM40 21-40 ft (6.4-12.1 m) heights^{1,7} For no sensor, leave part number field blank</p>	<p>C6W CL720 600v SO cord, no plug⁸ Locking plug, 20 AMP, 277v⁸</p> <p>C515 CL2420 Straight plug, 120v⁸ Locking plug, 15 AMP, 347v⁸</p> <p>CL515 CL820 Locking plug, 120v⁸ Locking plug, 15 AMP, 480v⁸</p> <p>CL715 For no cord/plug, leave Locking plug, 15 AMP, 277v⁸ part number field blank</p>

NOTES

- Information on Lusio accessories is available on a separate specification sheet.
- Consult factory for other CCT/CRI offerings. Lead times may be longer.
- Cables supplied by others or see accessories for Lusio cable kits.
- J-box and connecting hardware supplied by others. See Installation Instructions for more information.
- Cables (included with hook/loop mount option) are required to level fixture.
- Connecting hardware supplied by Lusio. Stem supplied by others.
- Integrated occupancy sensors are only available for Essentials fixtures with 120-277v. Consult factory for options on 347-480v fixtures.
- All cords are 16/3, 6 ft (1.8 m) long, and white.



PRELIMINARY DATA

AS OF OCTOBER 2012: The Lusio Essentials Bay Series 6MS fixture is engineering complete and in final certification stages. *Contact factory for lead times on this fixture.* Information is reliable but deemed **PRELIMINARY DATA** pending final certifications. See Lusio website at www.LusioLighting.com for updates.

NO BAFFLE

Description

115° distribution. 1.46 maximum spacing criterion (diagonal) allows for wide fixture spacing and high uniformity. Typically used for mounting heights of 15-30 feet (4.5-9 M).

Fixture Data

CCT: Cool White

Fixture Lumen Output: 17,000 lms

Fixture Wattage: 187W (110-277 VAC)

Fixture Efficacy Rating: 91 lm/W

Spacing Criteria

Diagonal	1.46		
Lateral Plane	0°-180°	90°-270°	
	1.34	1.32	

CCT Light Output Conversions

NEUTRAL WHITE: 0.97

Test date: 08-MAY-2012

Tests done in accordance with LM79. Consult factory for LM79 reports. See www.lusiolighting.com for IES files.

Zonal Lumen Summary

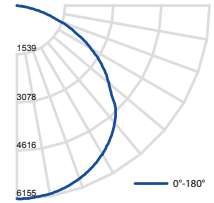
Zone	Lumens	% Fixture
0° - 30°	4,894.0	29%
0° - 40°	8,135.8	48%
0° - 60°	14,568.1	86%
0° - 90°	16,999.9	100%
0° - 180°	17,000.0	100%

AS OF OCTOBER 2012: The Lusio Essentials Bay Series GMS fixture is engineering complete and in final certification stages. Contact factory for lead times on this fixture. Information is reliable but deemed **PRELIMINARY DATA**.

Candela Distribution Array

	0°	45°	90°
0°	6134	6134	6134
10°	6083	6067	6057
20°	5855	5860	5840
30°	5467	5488	5405
40°	4853	4893	4737
50°	3835	4038	3866
60°	2740	2747	2715
70°	1526	1210	325
80°	442	124	128
90°	2	2	2

Candela Plot



Coefficients of Utilization

RCR	80				70				50				30				10				0	
	RW	70	50	30	10	70	50	30	10	50	30	10	50	30	10	50	30	10	50	30	10	0
0	119	119	119	119	116	116	116	116	111	111	111	106	106	106	102	102	102	102	100	100	100	0
1	110	106	102	99	107	104	100	97	99	97	94	95	93	91	92	90	88	86	86	86	86	0
2	101	93	87	82	98	91	85	81	88	83	79	85	80	77	82	78	75	73	73	73	73	0
3	92	82	74	68	90	81	73	68	78	72	67	75	70	65	72	68	64	62	62	62	62	0
4	84	73	65	58	82	72	64	58	69	62	57	67	61	56	65	60	55	53	53	53	53	0
5	78	65	57	50	76	64	56	50	62	55	49	60	54	49	58	53	48	46	46	46	46	0
6	72	59	50	44	70	58	50	44	56	49	43	54	48	43	53	47	42	40	40	40	40	0
7	66	53	45	39	65	52	44	38	51	43	38	49	43	38	48	42	38	36	36	36	36	0
8	62	48	40	34	60	48	40	34	46	39	34	45	39	34	44	38	34	32	32	32	32	0
9	58	44	36	31	56	44	36	31	43	36	31	42	35	30	41	35	30	28	28	28	28	0
10	54	41	33	28	53	40	33	28	39	32	28	38	32	28	38	32	27	26	26	26	26	0

RCR=Room Cavity Ratio RC=Effective Ceiling Cavity Reflectance RW=Wall Reflectance Effective Floor Cavity Reflectance = 20%



WITH BAFFLE

Description

Optically designed white baffle provides additional glare control. Baffle is factory installed and must be specified at time of order.

Fixture Data

CCT: Cool White

Fixture Lumen Output: 16,800 lms

Fixture Wattage: 187W (110-277 VAC)

Fixture Efficacy Rating: 90 lm/W

Spacing Criteria

Diagonal	1.46		
Lateral Plane	0°-180°	90°-270°	
	1.34	1.32	

CCT Light Output Conversions

NEUTRAL WHITE: 0.97

Test date: 08-MAY-2012

Tests done in accordance with LM79. Consult factory for LM79 reports. See www.lusiolighting.com for IES files.

Zonal Lumen Summary

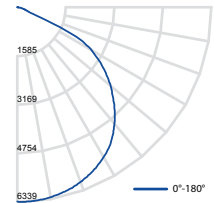
Zone	Lumens	% Fixture
0° - 30°	5,050.7	30%
0° - 40°	8,405.3	50%
0° - 60°	15,036.6	90%
0° - 90°	16,799.8	100%
0° - 180°	16,800.0	100%

AS OF OCTOBER 2012: The Lusio Essentials Bay Series GMS fixture is engineering complete and in final certification stages. Contact factory for lead times on this fixture. Information is reliable but deemed **PRELIMINARY DATA**.

Candela Distribution Array

	0°	45°	90°
0°	6323	6323	6323
10°	6285	6252	6230
20°	6046	6046	6002
30°	5639	5677	5579
40°	4934	5082	4901
50°	3972	4168	3943
60°	2808	2886	2725
70°	358	324	250
80°	142	101	87
90°	2	4	3

Candela Plot



Coefficients of Utilization

RCR	80				70				50				30				10				0	
	RW	70	50	30	10	70	50	30	10	50	30	10	50	30	10	50	30	10	50	30	10	0
0	119	119	119	119	116	116	116	116	111	111	111	106	106	106	102	102	102	102	100	100	100	0
1	111	107	103	100	108	104	101	98	100	97	95	96	94	92	93	91	89	87	87	87	87	0
2	102	94	88	83	99	92	87	82	89	84	80	86	82	79	83	80	77	75	75	75	75	0
3	93	84	76	70	91	82	75	70	79	73	68	76	72	67	74	70	66	64	64	64	64	0
4	86	74	66	60	83	73	66	60	71	64	59	68	63	58	66	61	57	55	55	55	55	0
5	79	67	58	52	77	66	58	52	63	56	51	62	55	51	60	54	50	48	48	48	48	0
6	73	60	52	45	71	59	51	45	57	50	45	56	49	44	54	48	44	42	42	42	42	0
7	67	54	46	40	66	54	46	40	52	45	40	51	44	39	49	44	39	37	37	37	37	0
8	63	50	41	36	61	49	41	36	48	40	35	46	40	35	45	39	35	33	33	33	33	0
9	59	45	37	32	57	45	37	32	44	37	32	43	36	32	42	36	32	30	30	30	30	0
10	55	42	34	29	54	41	34	29	40	34	29	39	33	29	39	33	29	27	27	27	27	0

RCR=Room Cavity Ratio RC=Effective Ceiling Cavity Reflectance RW=Wall Reflectance Effective Floor Cavity Reflectance = 20%



FROSTED LENS

Description

Optional, semi-diffuse, acrylic lens to provide glare control and LED protection. Frosted lens is factory installed and must be specified at time of order.

Fixture Data

CCT: Cool White

Fixture Lumen Output: 14,000 lms

Fixture Wattage: 187W (110-277 VAC)

Fixture Efficacy Rating: 75 lm/W

Spacing Criteria

Diagonal	1.36		
Lateral Plane	0°-180°	90°-270°	
	1.24	1.24	

CCT Light Output Conversions

NEUTRAL WHITE: 0.97

Test date: 11-JUNE-2012

Tests done in accordance with LM79. Consult factory for LM79 reports. See www.lusiolighting.com for IES files.

Zonal Lumen Summary

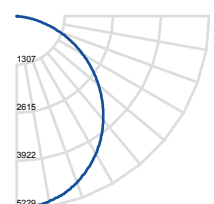
Zone	Lumens	% Fixture
0° - 30°	4,004.6	29%
0° - 40°	6,510.0	46%
0° - 60°	11,295.5	81%
0° - 90°	13,999.7	100%
0° - 180°	14,000.0	100%

AS OF OCTOBER 2012: The Lusio Essentials Bay Series GMS fixture is engineering complete and in final certification stages. Contact factory for lead times on this fixture. Information is reliable but deemed **PRELIMINARY DATA**.

Candela Distribution Array

	0°	45°	90°
0°	5212	5212	5212
10°	5096	5112	5113
20°	4800	4808	4797
30°	4306	4318	4303
40°	3663	3677	3663
50°	2910	2923	2906
60°	2089	2099	2079
70°	1250	1251	1243
80°	445	442	441
90°	1	3	2

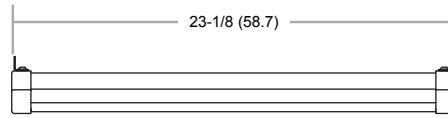
Candela Plot



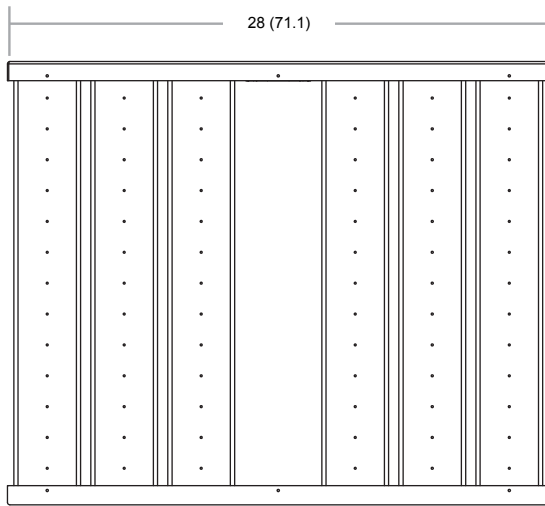
Coefficients of Utilization

RCR	80				70				50				30				10				0	
	RW	70	50	30	10	70	50	30	10	50	30	10	50	30	10	50	30	10	50	30	10	0
0	119	119	119	119	116	116	116	116	111	111	111	106	106	106	102	102	102	102	100	100	100	0
1	109	105	100	97	106	102	98	95	98	95	92	94	92	89	91	88	87	85	85	85	85	0
2	99	91	85	79	97	89	83	78	86	81	76	83	78	75	80	76	73	71	71	71	71	0
3	91	80	72	66	88	79	71	65	76	69	64	73	68	63	71	66	62	60	60	60	60	0
4	83	71	63	56	81	70	62	56	67	60	55	65	59	54	63	58	53	51	51	51	51	0
5	76	64	55	48	74	63	54	48	61	53	48	59	52	47	57	51	46	44	44	44	44	0
6	71	57	49	42	69	57	48	42	55	47	42	53	46	41	51	46	41	39	39	39	39	0
7	66	52	43	37	64	51	43	37	50	42	37	48	42	37	47	41	36</					

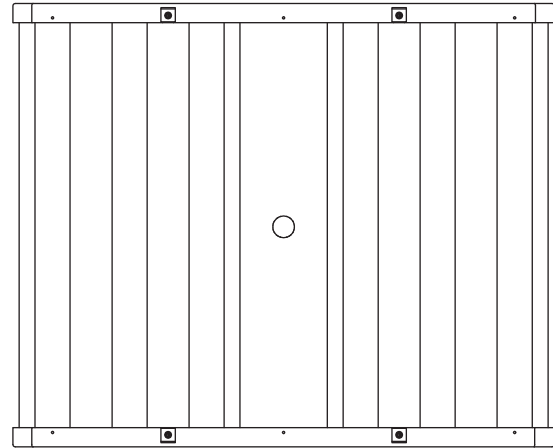
DIMENSIONS: INS (CMS)



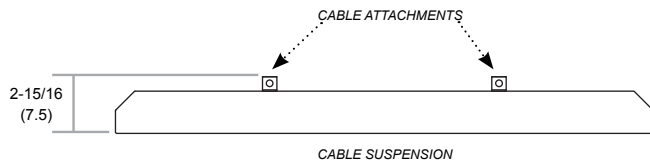
SIDE VIEW • CABLE SUSPENSION



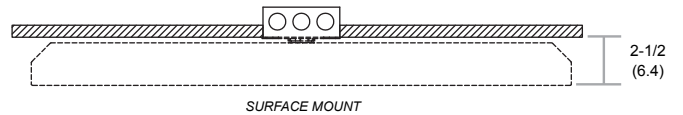
BOTTOM VIEW



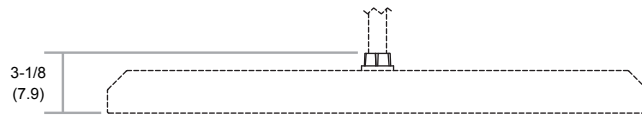
TOP VIEW



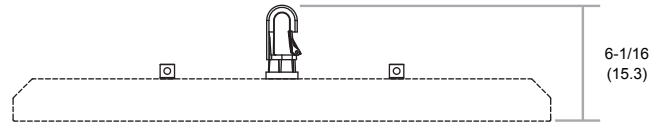
CABLE SUSPENSION



SURFACE MOUNT



STEM MOUNT



HOOK MOUNT

PRELIMINARY DATA

AS OF OCTOBER 2012: The Lusio Essentials Bay Series 6MS fixture is engineering complete and in final certification stages. *Contact factory for lead times on this fixture.* Information is reliable but deemed **PRELIMINARY DATA** pending final certifications. See Lusio website at www.LusioLighting.com for updates.