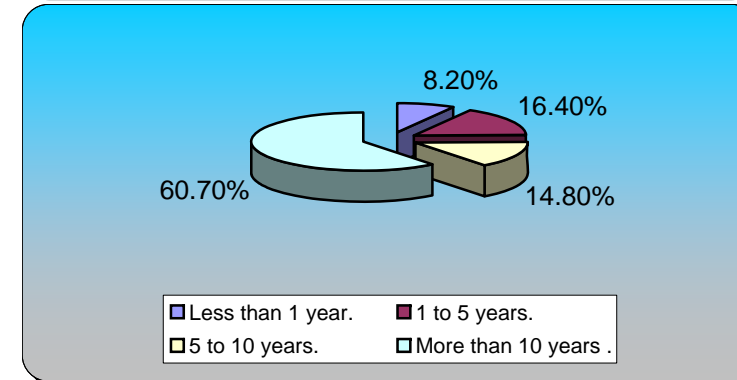
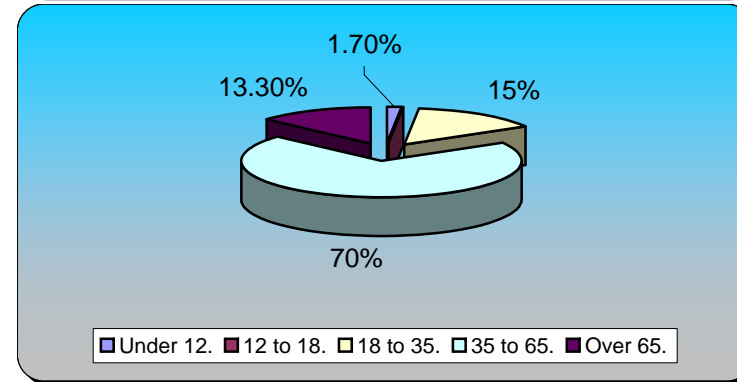
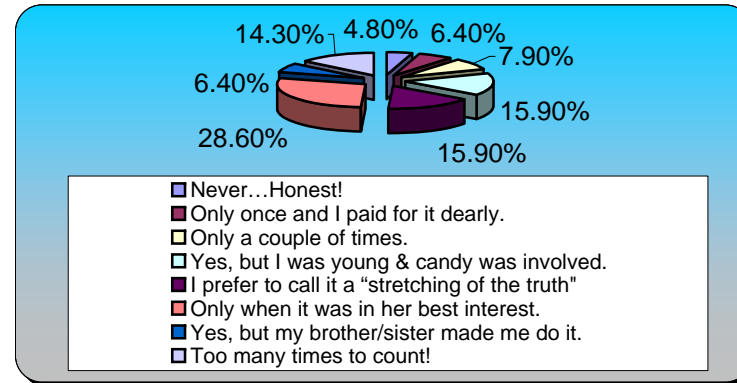


Turning Graphical Results by Question
Comprehensive Plan Update Public Meeting #1 Community Values & Attributes
Session Name: tosv 12-12-2007 6-19 PM -
Created: 12/12/2007 6:20 PM

1.) Have you ever lied to your mother?		Responses	
Never...Honest!	3	4.76%	
Only once and I paid for it dearly.	4	6.35%	
Only a couple of times.	5	7.94%	
Yes, but I was young & candy was involved.	10	15.87%	
I prefer to call it a "stretching of the truth"	10	15.87%	
Only when it was in her best interest.	18	28.57%	
Yes, but my brother/sister made me do it.	4	6.35%	
Too many times to count!	9	14.29%	
Totals	63	100%	

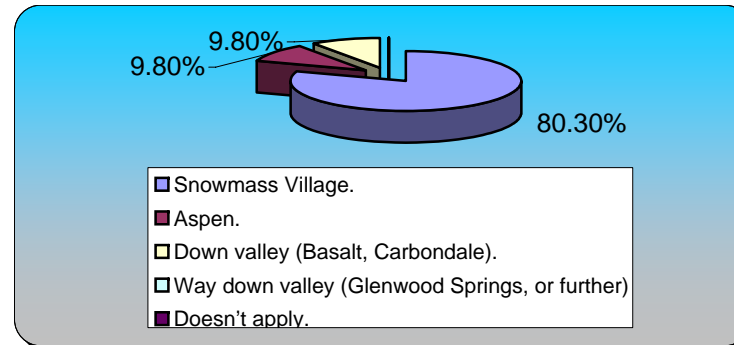
2.) How old are you?		Responses	
Under 12.	1	1.67%	
12 to 18.	0	0%	
18 to 35.	9	15%	
35 to 65.	42	70%	
Over 65.	8	13.33%	
Totals	60	100%	

3.) How long have you lived in Snowmass Village (or vicinity) ?		Responses	
Less than 1 year.	5	8.20%	
1 to 5 years.	10	16.39%	
5 to 10 years.	9	14.75%	
More than 10 years .	37	60.66%	
Totals	61	100%	



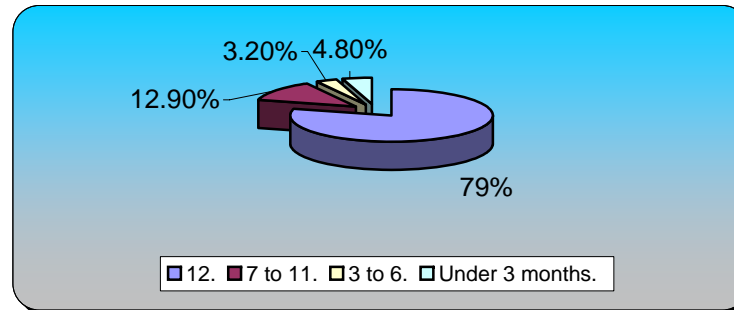
4.) When living or staying in the Snowmass area, where do you mostly reside?

	Responses	
Snowmass Village.	49	80.33%
Aspen.	6	9.84%
Down valley (Basalt, Carbondale).	6	9.84%
Way down valley (Glenwood Springs, or further)	0	0%
Doesn't apply.	0	0%
Totals	61	100%



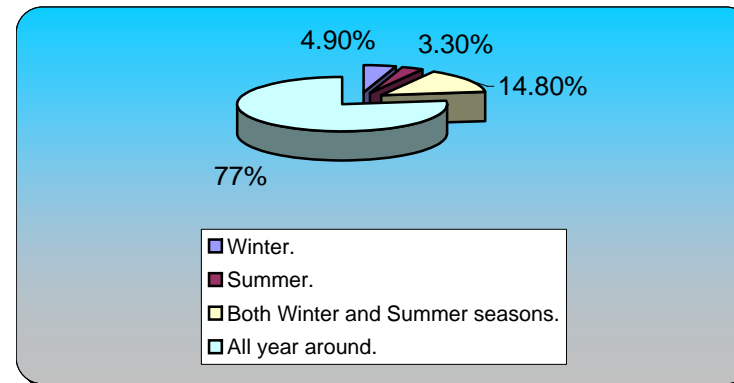
5.) How many months of the year do you reside in your Snowmass-area residence ?

	Responses	
12.	49	79.03%
7 to 11.	8	12.90%
3 to 6.	2	3.23%
Under 3 months.	3	4.84%
Totals	62	100%



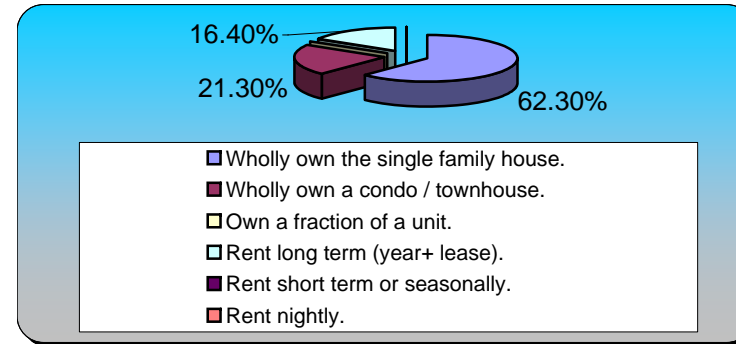
6.) When do you mostly reside in the Snowmass area?

	Responses	
Winter.	3	4.92%
Summer.	2	3.28%
Both Winter and Summer seasons.	9	14.75%
All year around.	47	77.05%
Totals	61	100%



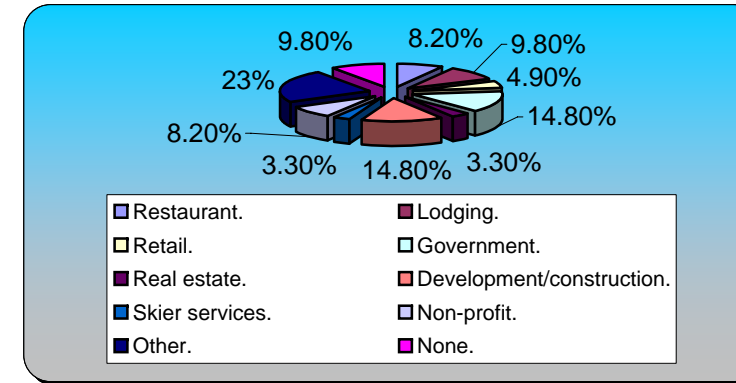
7.) In regard to your residence in the Snowmass area do you:

	Responses	
Wholly own the single family house.	38	62.30%
Wholly own a condo / townhouse.	13	21.31%
Own a fraction of a unit.	0	0%
Rent long term (year+ lease).	10	16.39%
Rent short term or seasonally.	0	0%
Rent nightly.	0	0%
Totals	61	100%



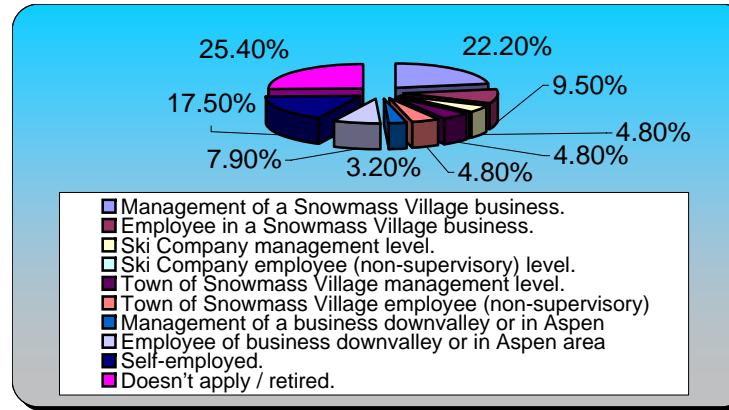
8.) In which type of work are you primarily employed ?

	Responses	
Restaurant.	5	8.20%
Lodging.	6	9.84%
Retail.	3	4.92%
Government.	9	14.75%
Real estate.	2	3.28%
Development/construction.	9	14.75%
Skier services.	2	3.28%
Non-profit.	5	8.20%
Other.	14	22.95%
None.	6	9.84%
Totals	61	100%



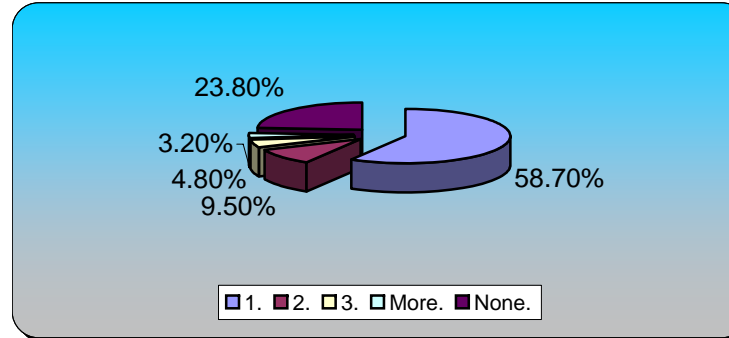
9.) What is your primary working status in Snowmass area?

	Responses	
Management of a Snowmass Village business.	14	22.22%
Employee in a Snowmass Village business.	6	9.52%
Ski Company management level.	3	4.76%
Ski Company employee (non-supervisory) level.	0	0%
Town of Snowmass Village management level.	3	4.76%
Town of Snowmass Village employee (non-	3	4.76%
Management of a business downvalley or in Aspen	2	3.17%
Employee of business downvalley or in Aspen area	5	7.94%
Self-employed.	11	17.46%
Doesn't apply / retired.	16	25.40%
Totals	63	100%



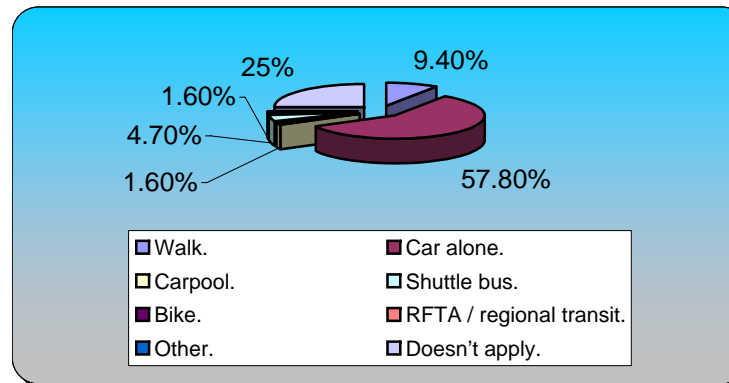
10.) How many jobs do you hold in a typical year?

	Responses	
1.	37	58.73%
2.	6	9.52%
3.	3	4.76%
More.	2	3.17%
None.	15	23.81%
Totals	63	100%



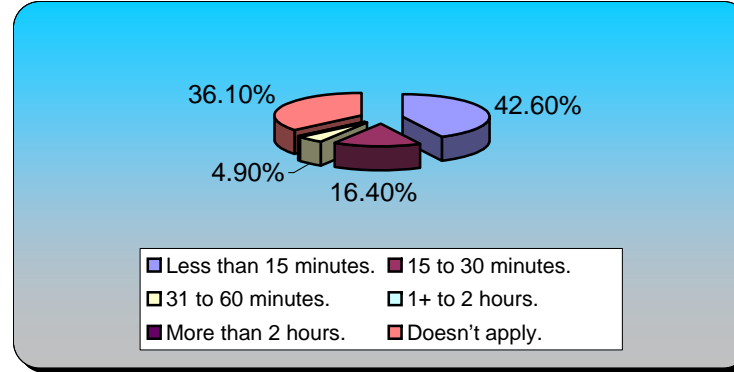
11.) How do you get to your primary Snowmass area job in winter ?

	Responses	
Walk.	6	9.38%
Car alone.	37	57.81%
Carpool.	1	1.56%
Shuttle bus.	3	4.69%
Bike.	0	0%
RFTA / regional transit.	1	1.56%
Other.	0	0%
Doesn't apply.	16	25%
Totals	64	100%



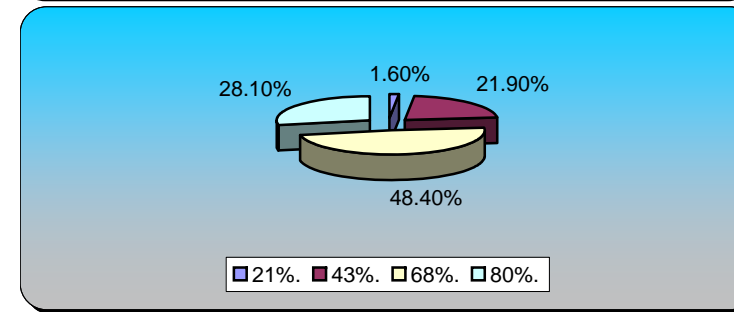
12.) If you work or live in Snowmass Village, how long does it take you to get to your primary job in winter ?

	Responses	
Less than 15 minutes.	26	42.62%
15 to 30 minutes.	10	16.39%
31 to 60 minutes.	3	4.92%
1+ to 2 hours.	0	0%
More than 2 hours.	0	0%
Doesn't apply.	22	36.07%
Totals	61	100%



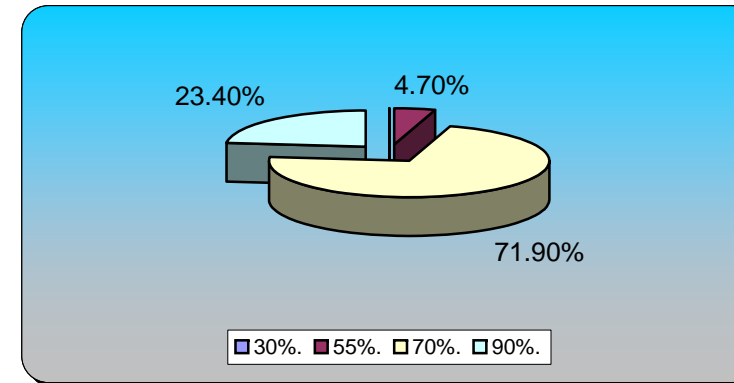
13.) In general, during the winter, how many of those that work in Snowmass Village do you think commute in?

	Responses	
21%.	1	1.56%
43%.	14	21.88%
68%.	31	48.44%
80%.	18	28.12%
Totals	64	100%



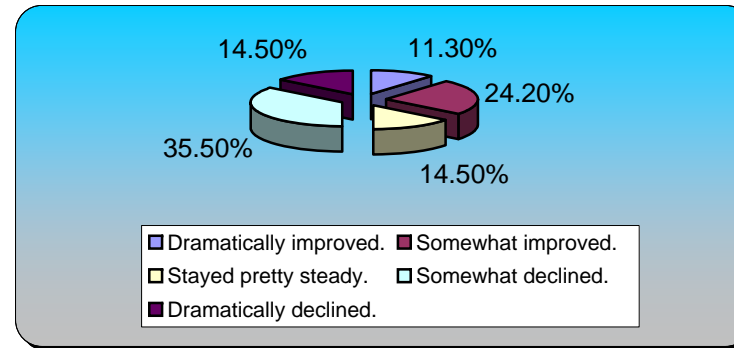
14.) What percentage of total Snowmass Village revenues is received during the Winter season?

	Responses	
30%.	0	0%
55%.	3	4.69%
70%.	46	71.88%
90%.	15	23.44%
Totals	64	100%



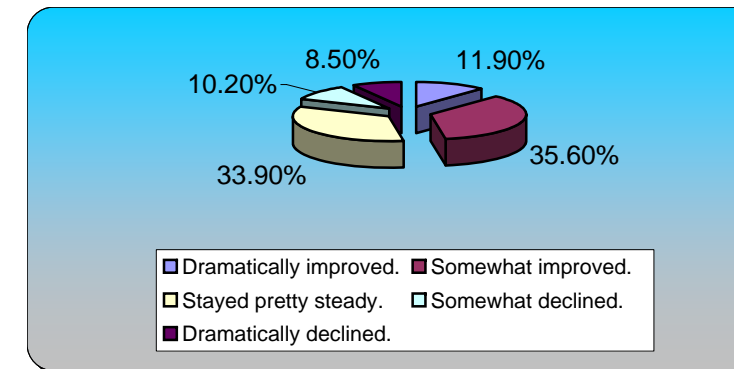
15.) In general, in your eyes, over the past 5 years how do you feel Snowmass Village has been doing as a community?

	Responses	
Dramatically improved.	7	11.29%
Somewhat improved.	15	24.19%
Stayed pretty steady.	9	14.52%
Somewhat declined.	22	35.48%
Dramatically declined.	9	14.52%
Totals	62	100%



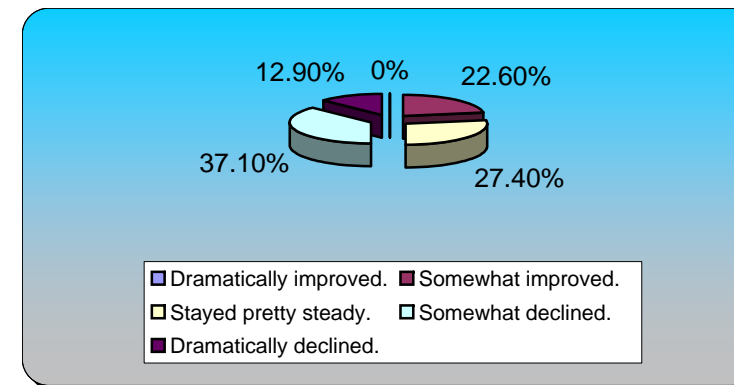
16.) In general, over the past 5 years how do you feel Snowmass Village has been doing as a resort?

	Responses	
Dramatically improved.	7	11.86%
Somewhat improved.	21	35.59%
Stayed pretty steady.	20	33.90%
Somewhat declined.	6	10.17%
Dramatically declined.	5	8.47%
Totals	59	100%



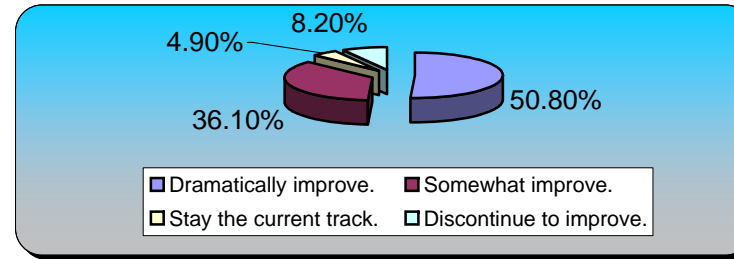
17.) In general, relative to the competition, over the past 5 years, how do you feel Snowmass Village has been doing as a resort?

	Responses	
Dramatically improved.	0	0%
Somewhat improved.	14	22.58%
Stayed pretty steady.	17	27.42%
Somewhat declined.	23	37.10%
Dramatically declined.	8	12.90%
Totals	62	100%



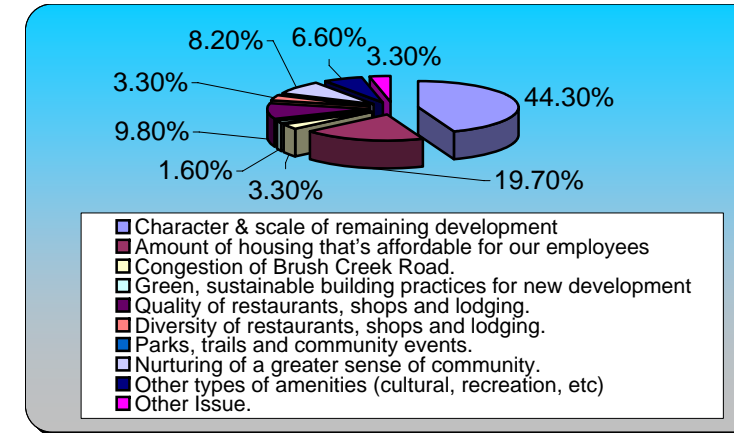
18.) In general, over the next 5 years how do you feel Snowmass Village need to do as a resort community?

	Responses	
Dramatically improve.	31	50.82%
Somewhat improve.	22	36.07%
Stay the current track.	3	4.92%
Discontinue to improve.	5	8.20%
Totals	61	100%



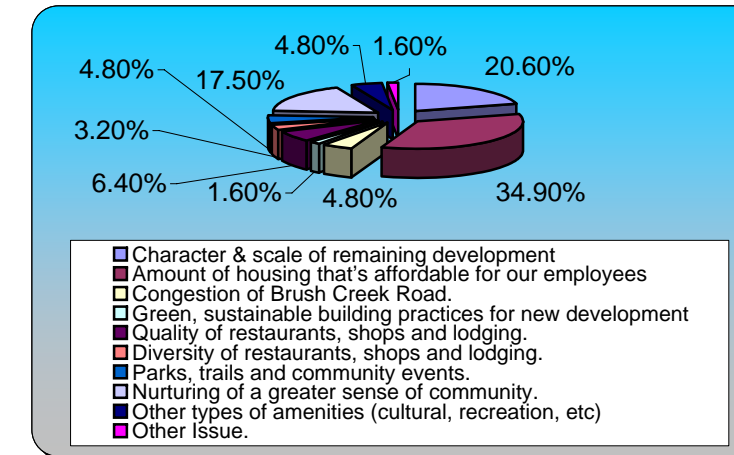
Which of the following do you feel is the HIGHEST PRIORITY for Snowmass Village for the next 5 to 10 years?

	Responses	
Character & scale of remaining development	27	44.26%
Amount of housing that's affordable for our employees	12	19.67%
Congestion of Brush Creek Road.	2	3.28%
Green, sustainable building practices for new development	1	1.64%
Quality of restaurants, shops and lodging.	6	9.84%
Diversity of restaurants, shops and lodging.	2	3.28%
Parks, trails and community events.	0	0%
Nurturing of a greater sense of community.	5	8.20%
Other types of amenities (cultural, recreation, etc)	4	6.56%
Other Issue.	2	3.28%
Totals	61	100%



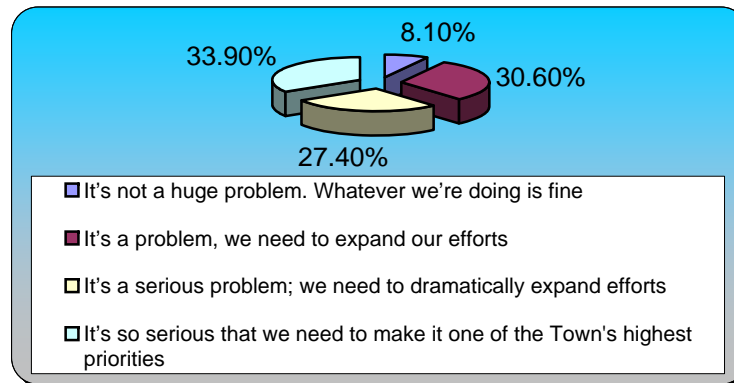
21.) Which of the following do you feel is the SECOND HIGHEST PRIORITY for Snowmass Village for the next 5 to 10 years?

	Responses	
Character & scale of remaining development	13	20.63%
Amount of housing that's affordable for our employees	22	34.92%
Congestion of Brush Creek Road.	3	4.76%
Green, sustainable building practices for new development	1	1.59%
Quality of restaurants, shops and lodging.	4	6.35%
Diversity of restaurants, shops and lodging.	2	3.17%
Parks, trails and community events.	3	4.76%
Nurturing of a greater sense of community.	11	17.46%
Other types of amenities (cultural, recreation, etc)	3	4.76%
Other Issue.	1	1.59%
Totals	63	100%



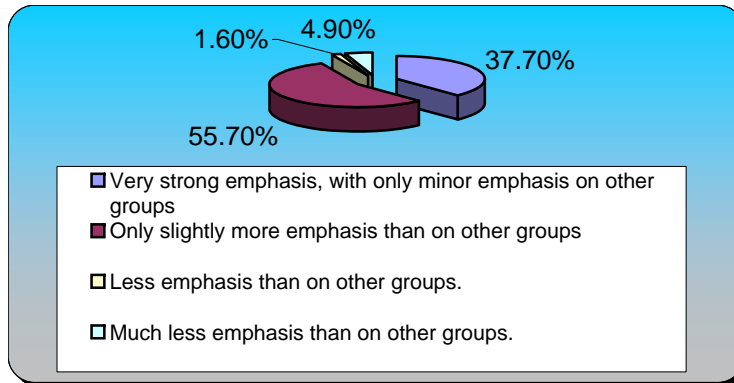
22.) How significant a problem do you feel is the lack of affordable housing for Snowmass Village workers?

	Responses	
It's not a huge problem. Whatever we're doing is fine	5	8.06%
It's a problem, we need to expand our efforts	19	30.65%
It's a serious problem; we need to dramatically expand	17	27.42%
It's so serious that we need to make it one of the	21	33.87%
Totals	62	100%



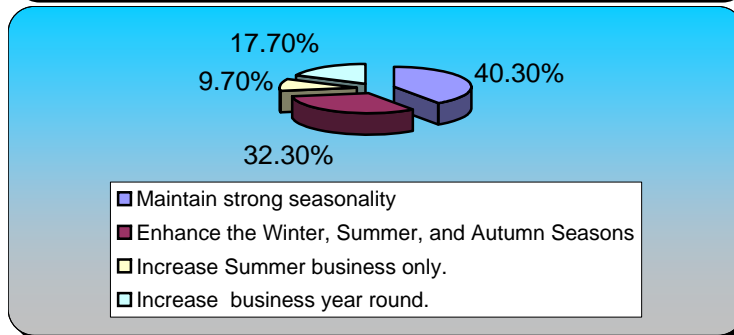
23.) Regarding the identity of Snowmass Village, to what importance do you feel "family" orientation should have?

	Responses	
Very strong emphasis, with only minor emphasis on	23	37.70%
Only slightly more emphasis than on other groups	34	55.74%
Less emphasis than on other groups.	1	1.64%
Much less emphasis than on other groups.	3	4.92%
Totals	61	100%



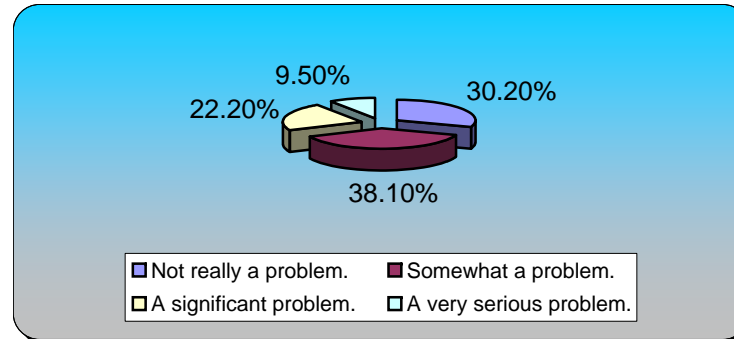
24.) Snowmass Village currently has significant seasonal fluctuations in business. Which of the following do you MOSTLY favor?

	Responses	
Maintain strong seasonality	25	40.32%
Enhance the Winter, Summer, and Autumn Seasons	20	32.26%
Increase Summer business only.	6	9.68%
Increase business year round.	11	17.74%
Totals	62	100%



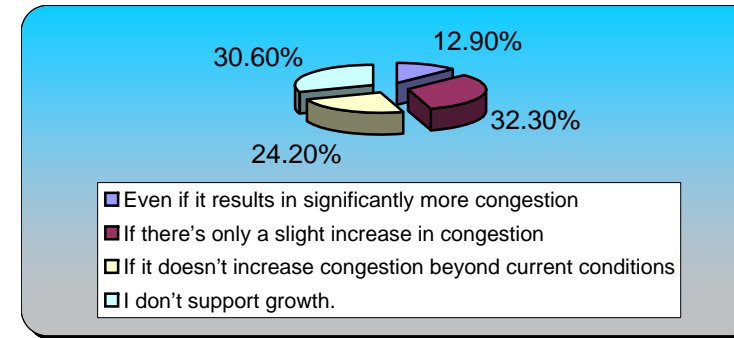
25.) In general, how significant a problem is traffic congestion on Brush Creek Road?

	Responses	
Not really a problem.	19	30.16%
Somewhat a problem.	24	38.10%
A significant problem.	14	22.22%
A very serious problem.	6	9.52%
Totals	63	100%



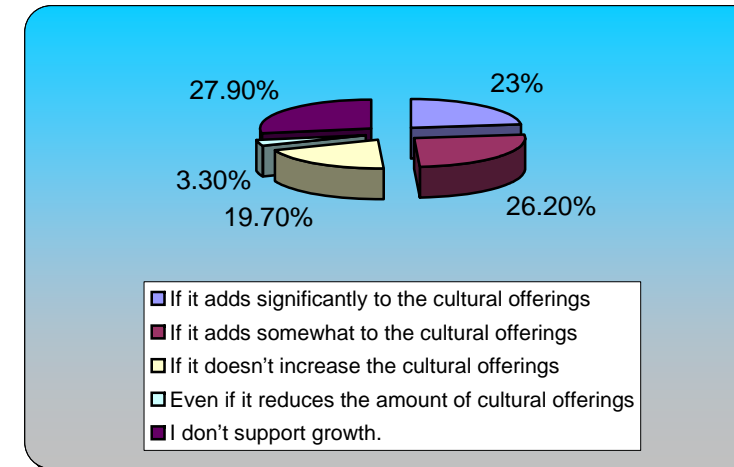
26.) Under which of the following conditions would you support additional growth in Snowmass Village ?

	Responses	
Even if it results in significantly more congestion	8	12.90%
If there's only a slight increase in congestion	20	32.26%
If it doesn't increase congestion beyond current	15	24.19%
I don't support growth.	19	30.65%
Totals	62	100%



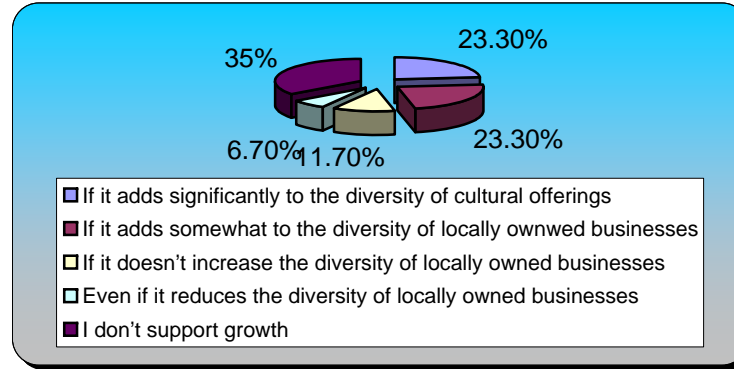
27.) Under which of the following conditions would you support additional growth in the Snowmass Village?

	Responses	
If it adds significantly to the cultural offerings	14	22.95%
If it adds somewhat to the cultural offerings	16	26.23%
If it doesn't increase the cultural offerings	12	19.67%
Even if it reduces the amount of cultural offerings	2	3.28%
I don't support growth.	17	27.87%
Totals	61	100%



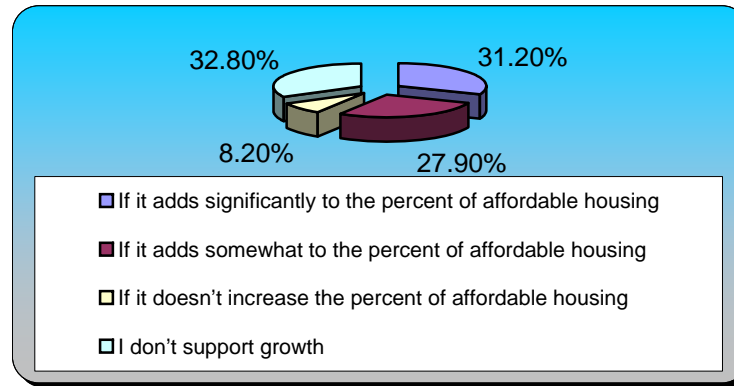
28.) Under which of the following conditions would you support additional growth in the Snowmass Village?

	Responses	
If it adds significantly to the diversity of cultural	14	23.33%
If it adds somewhat to the diversity of locally owned	14	23.33%
If it doesn't increase the diversity of locally owned	7	11.67%
Even if it reduces the diversity of locally owned	4	6.67%
I don't support growth	21	35%
Totals	60	100%



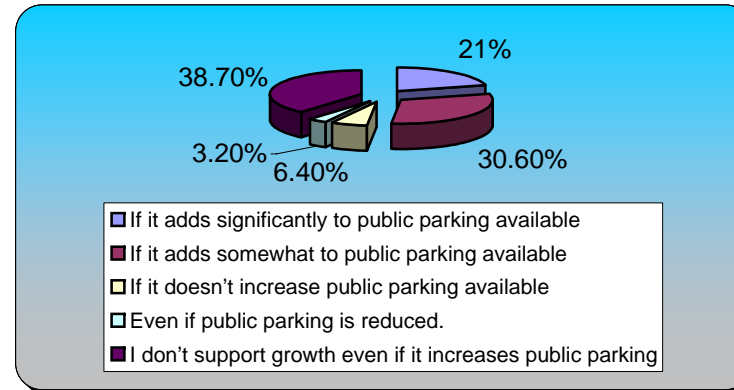
29.) Under which of the following conditions would you support additional growth in Snowmass Village?

	Responses	
If it adds significantly to the percent of affordable	19	31.15%
If it adds somewhat to the percent of affordable	17	27.87%
If it doesn't increase the percent of affordable housing	5	8.20%
I don't support growth	20	32.79%
Totals	61	100%



30.) Under which of the following conditions would you support additional growth in the Snowmass Village?

	Responses	
If it adds significantly to public parking available	13	20.97%
If it adds somewhat to public parking available	19	30.65%
If it doesn't increase public parking available	4	6.45%
Even if public parking is reduced.	2	3.23%
I don't support growth even if it increases public	24	38.71%
Totals	62	100%



31.) Under which of the following conditions would you support additional growth in Snowmass Village?

	Responses	
If it significantly increases quantity, quality of retail,	12	20%
If it adds somewhat to the quantity and quality of retail,	18	30%
Only to the extent that it is needed to support	17	28.33%
I don't support growth for any of the above.	13	21.67%
Totals	60	100%

